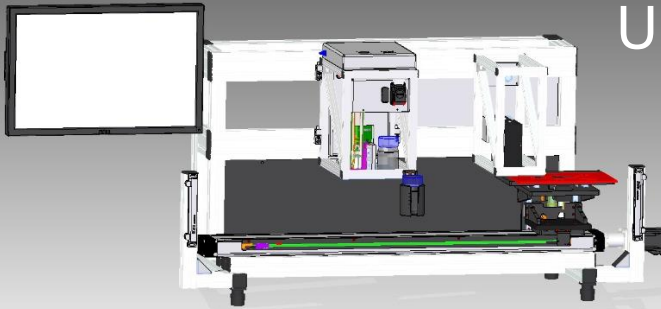


Uridium ULIN1003



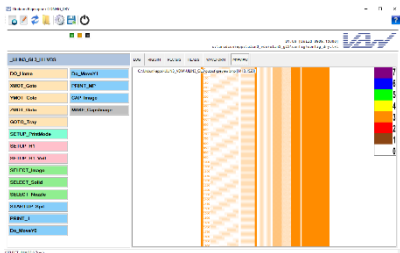
Linear XYZ Printing base for VDW-Uridium print-lab line

As part of the Uridium Modular Platform family, ULIN1003 is a 3-axis linear printing stage that allows process development for several type of inkjet print-heads.

It can carry the Uridium Print-Head bridges a peripheral post-print component or camera inspection.

Features

- Fully Uridium software integrated
- Fully Scriptable and flexible
- Single point print for motion and print

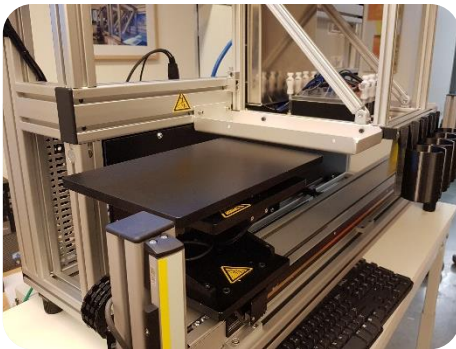
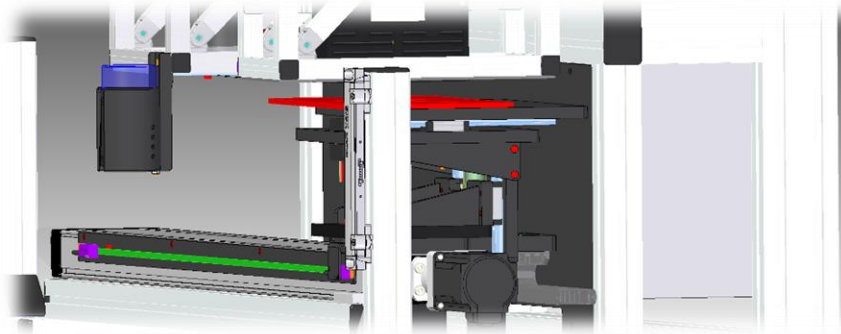


Specifications

- X axis, stroke of 800mm, 50 to 800mm/sec
- Y-axis stroke of 60mm with 5um resolution
- Z-axis stroke of 60mm with 5um resolution
- Compabile with uridium print-head bridges



Dijkstraat 17
B1851 Humbeek (Grimbergen)
Belgium
+32 486 370 051
werner@vdw-consulting.com
www.vdw-consulting.com



Accuracies

- X-speed accuracy : $< \pm 1\%$
- Y-wobble over X-motion : $< \pm 10\mu\text{m}/20\text{mm}$
- Y and Z -resolution : $5\mu\text{m}$
- Y and Z-reproducibility : $< \pm 10\mu\text{m}$
- Y and Z Homing reproducibility : $< \pm 20\mu\text{m}$
- Optical Renishaw Encoder for printing

Supported print-heads (2019)

- Fujifilm: Samba(1,2), SG1024(1)
- Konica Minolta: KM1024i, KM1800i(1,2)
- Kyocera: KJ4A(1,2) KJ4B(1,2,4)
- Ricoh: GEN5(1)
- Seiko: RC1536(1)
- Toshiba-Tec: CF1(1,2)
- Xaar: XR1003(1,2)

