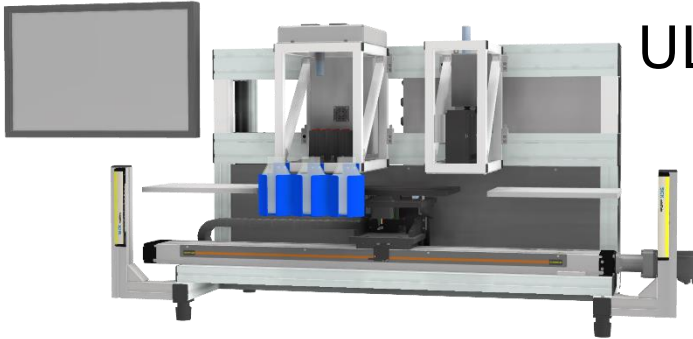


Uridium ULIN1003



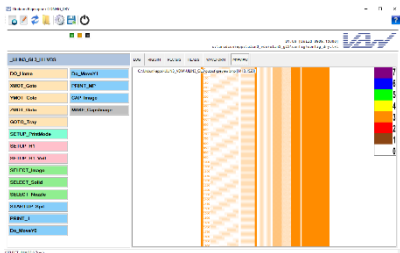
Linear XYZ Printing base for VDW-Uridium print-lab line

As part of the Uridium Modular Platform family, ULIN1003 is a 3-axis linear printing stage that allows process development for several type of inkjet print-heads.

It can carry the Uridium Print-Head bridges a peripheral post-print component or camera inspection.

Features

- Fully Uridium software integrated
- Fully Scriptable and flexible
- Single point print for motion and print

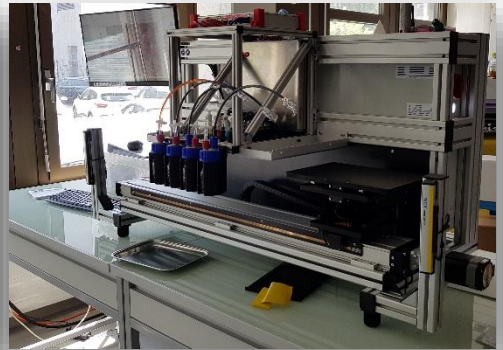
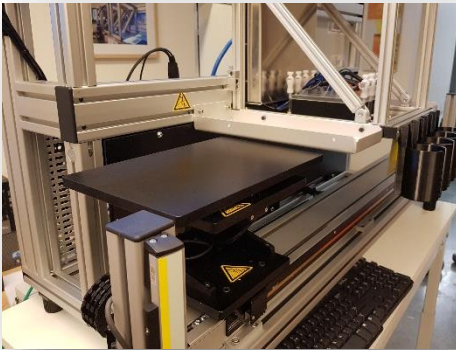
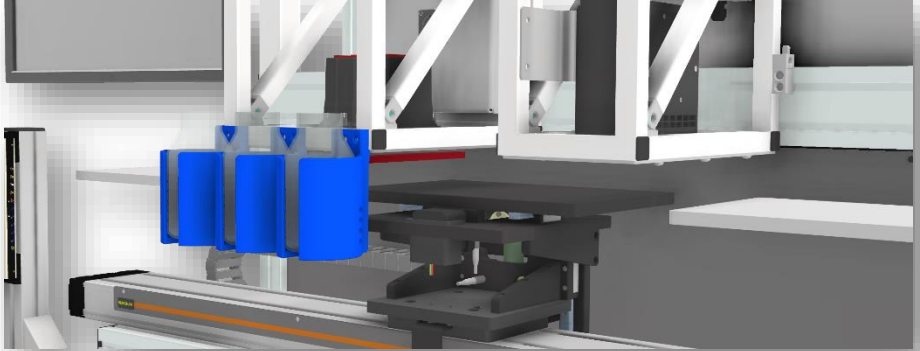


Specifications

- 2 versions: X-axis, stroke of 800mm, 50 to 350mm/sec
X-axis, stroke of 1200mm, 50 to 300mm/sec
- Y-axis stroke of 50mm with 5um resolution
- Z-axis stroke of 50mm with 5um resolution
- Compatible with uridium print-head bridges



Dijkstraat 17
B1851 Humbeek (Grimbergen)
Belgium
+32 486 370 051
werner@vdw-consulting.com
www.vdw-consulting.com



Accuracies

- X-speed accuracy : $< \pm 1\%$
- Y-wobble over X-motion : $< \pm 10\mu\text{m}/20\text{mm}$
- Y and Z -resolution : $5\mu\text{m}$
- Y and Z- reproducibility: $< \pm 10\mu\text{m}$
- Y and Z Homing reproducibility : $< \pm 20\mu\text{m}$
- Optical Renishaw Encoder for printing

Supported print-heads (2022)

- Epson S800(1x, 2x)
- Fujifilm: Samba(1x,2x), SG1024(1x)
- Konica Minolta: KM1024i,KM1800i(1x,2x,4x)
- Kyocera: KJ4A(1x,2x) KJ4B(1x,2x,4x)
- Ricoh: GEN5(1x,2x)
- Toshiba-Tec: CF1(1x,2x)
- Xaar: XR1003(1x,2x)

